



COURSE REPORT

An update on the progress made since the last report in early December.



On the 1st hole we've installed a further 4 lateral drains heading towards the green. There's already a noticeable difference on this area.

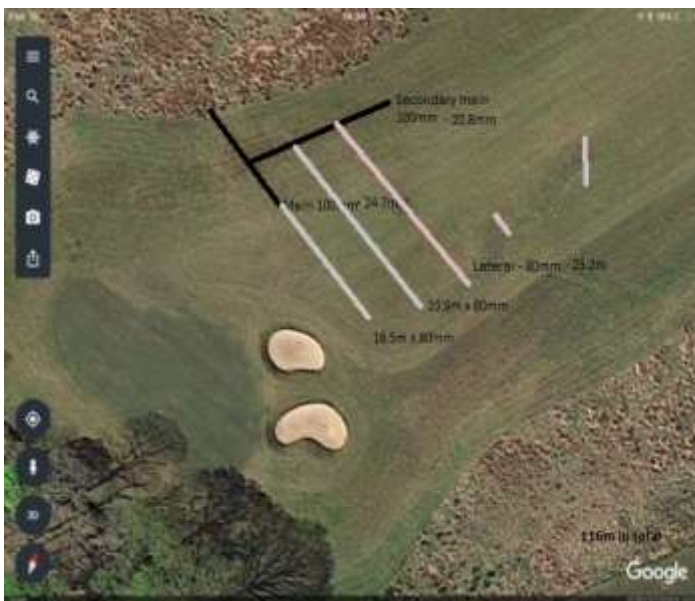


On the first part of the 9th we've installed a drain into existing drainage on the right side of the hole. The intention here is to build on this and dry up the bale out area off the tee.

On the left side we've made a start to a system in an area that always proves difficult to mow during wet spells. The weather turned for the worst half way through this task, so we need to go back in when favourable ground conditions return.



Moving further up the 9th we've installed two drains into an existing gully just behind the left fairway bunker. The intention here is to pull a main at right angles across the fairway and install laterals at 5m centres running both back towards the bunkers and forwards to the green.



Moving further down the fairway again, another 2 laterals have been added to the drainage installed earlier in the winter just short of the green.



And finally we've made a start to a drain which will deal with the low, wet area between the blue and white tees on 13.